

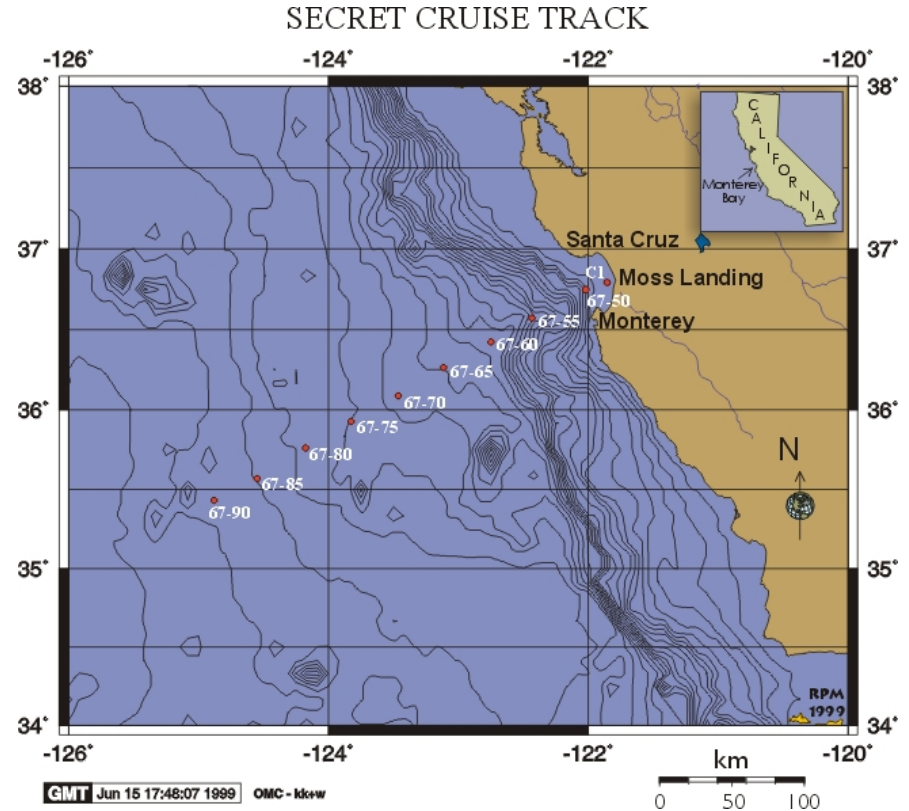
Cross Regional Comparative Data Efforts

Baldo Marinovic UCSC, PaCOOS

Mark Ohman SIO

Studies of the Ecological and Chemical Responses to Environmental Trends (SECRET)

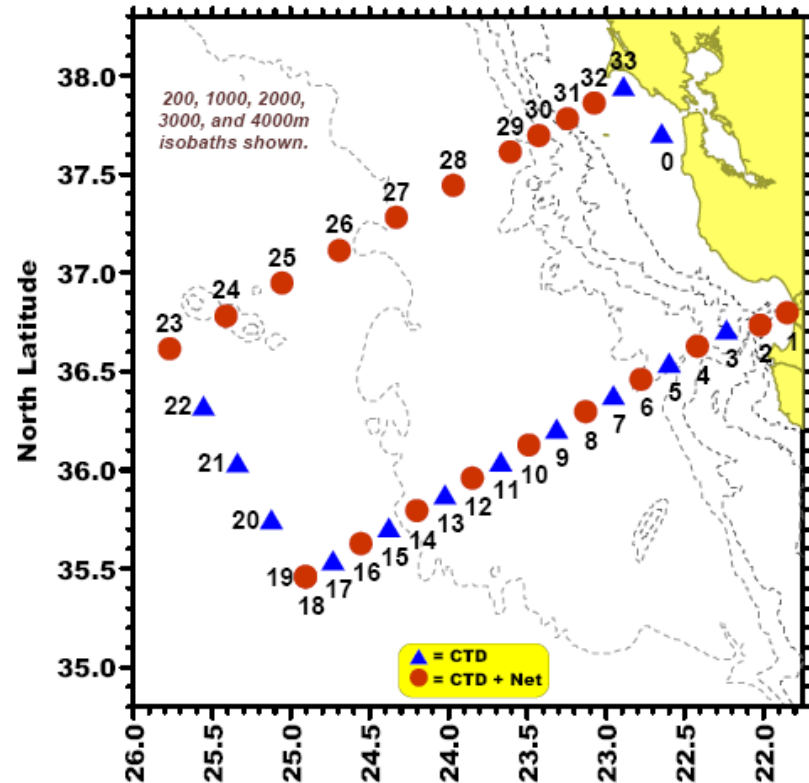
- MBARI/NPS/UCSC
- 1997-present
- Quarterly cruises along CalCOFI L-67
- Incorporated into PacOOS with JIMO Funding in 2003

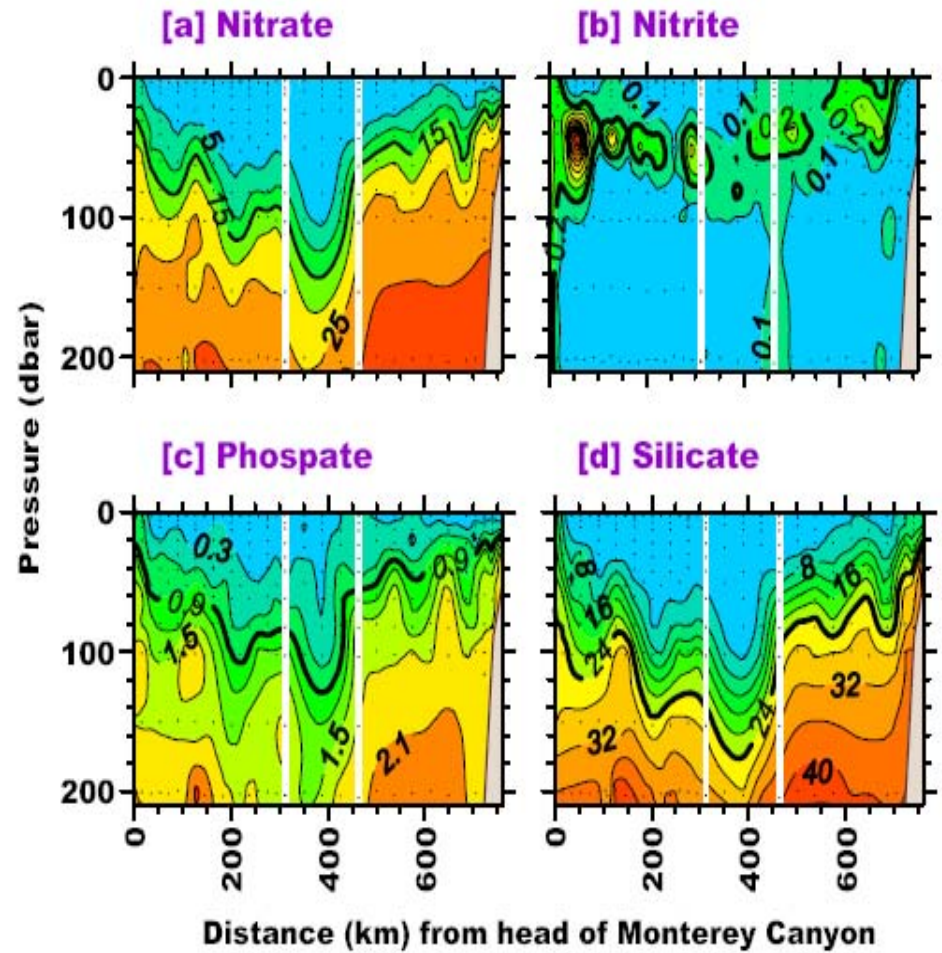
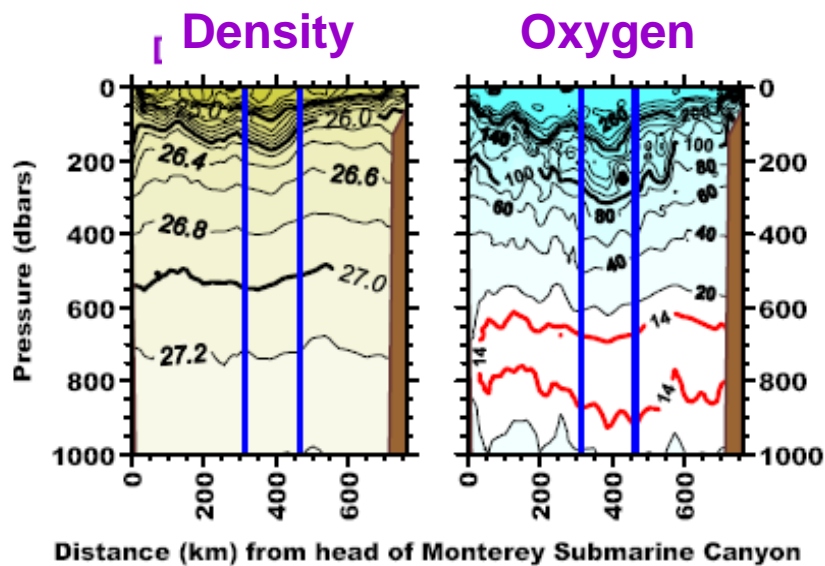
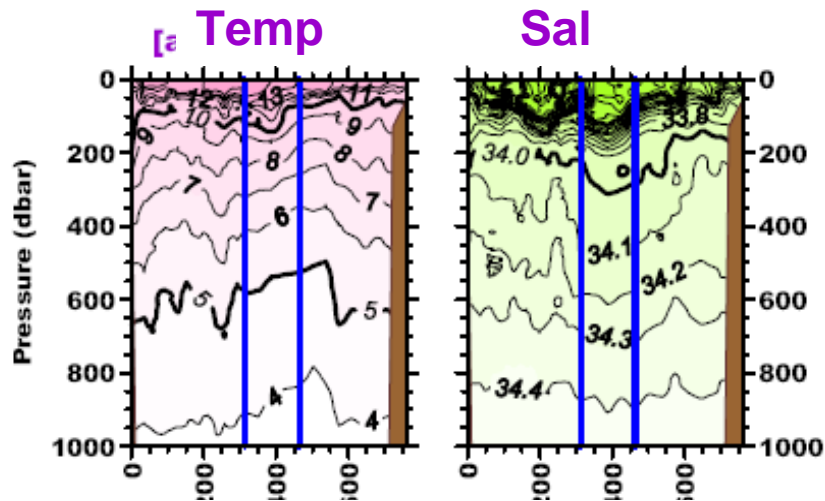


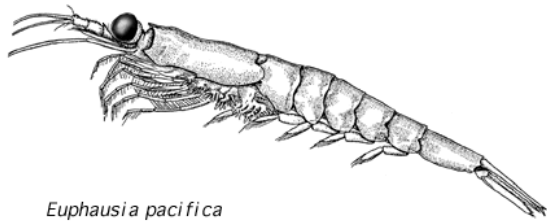
<http://www.mbari.org/bog/Projects/secret/default.htm>

SECRET cont.

- 2004 expanded to include L-60
- Summer/Fall cruises
- Personnel support for Winter/Spring cruises (NMFS)

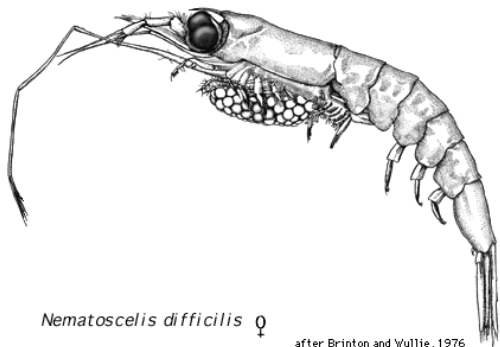
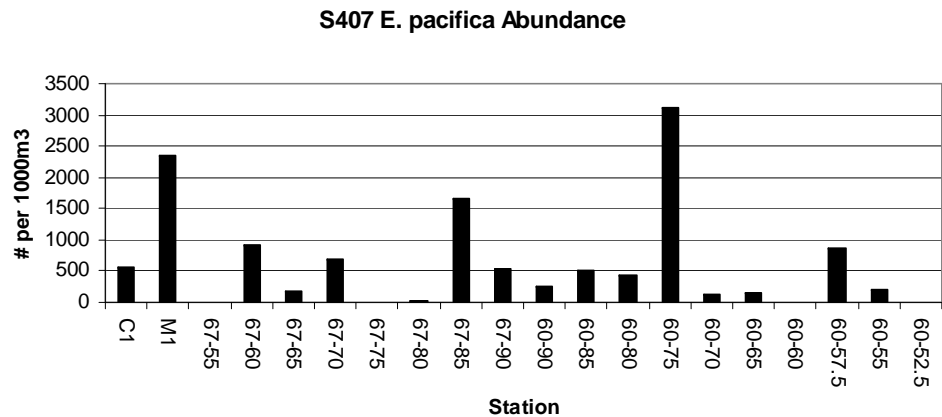






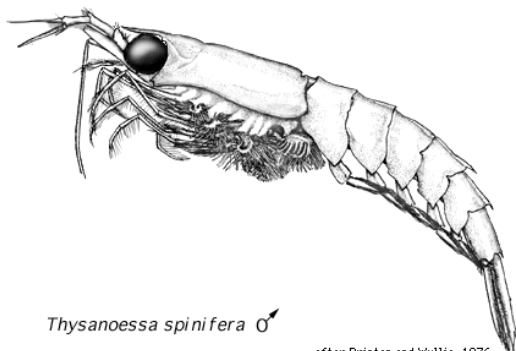
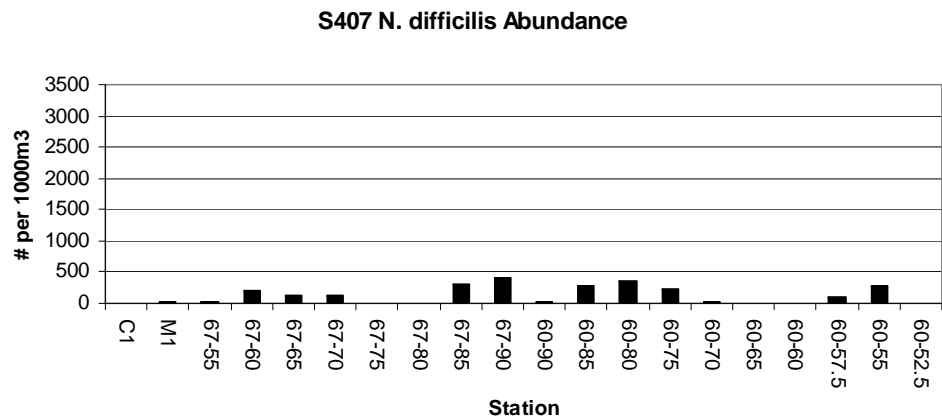
Euphausia pacifica

after Brinton and Wyllie, 1976



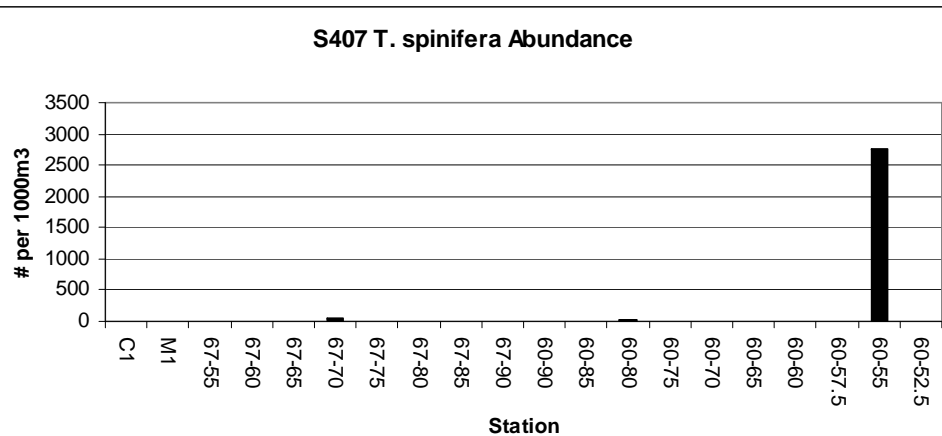
Nematoscelis difficilis ♀

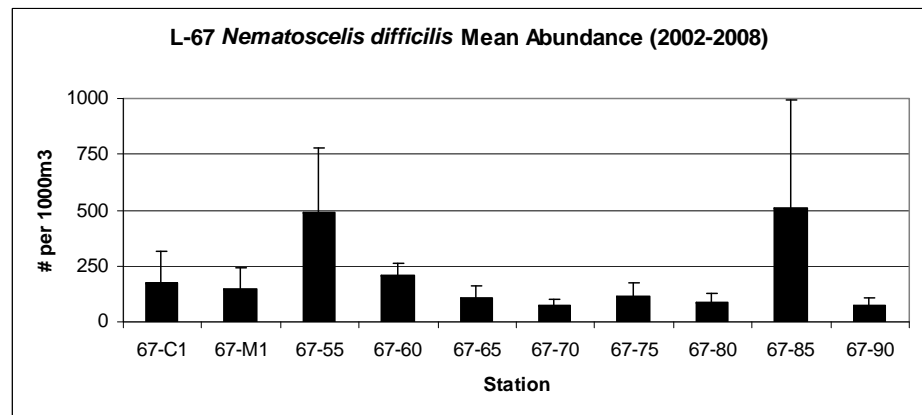
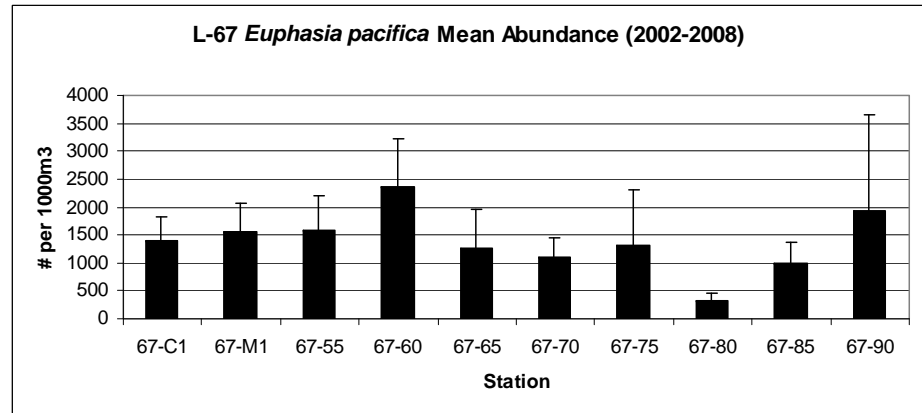
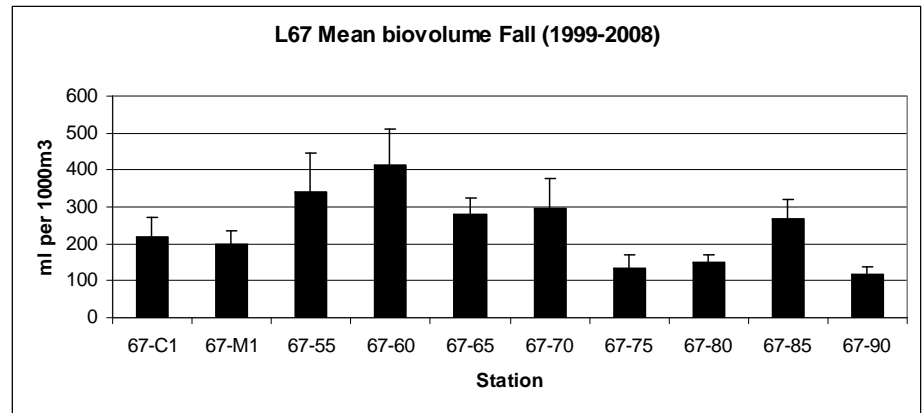
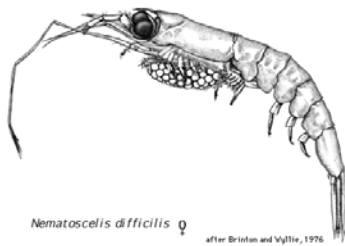
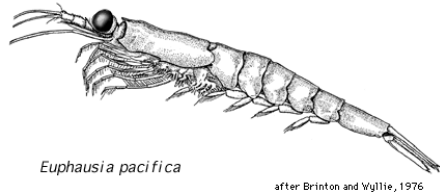
after Brinton and Wyllie, 1976



Thysanoessa spinifera ♂

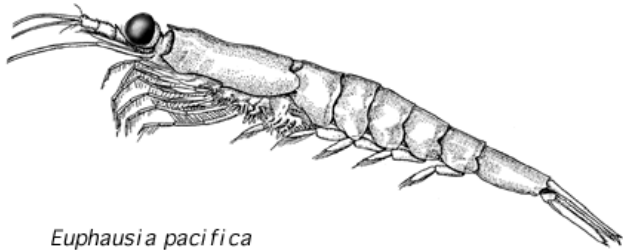
after Brinton and Wyllie, 1976





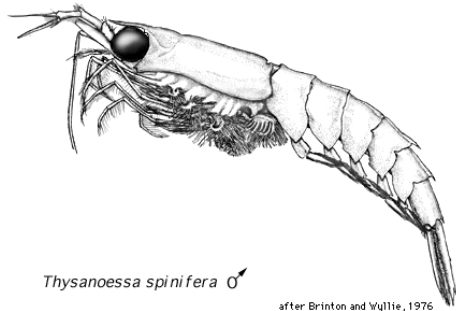
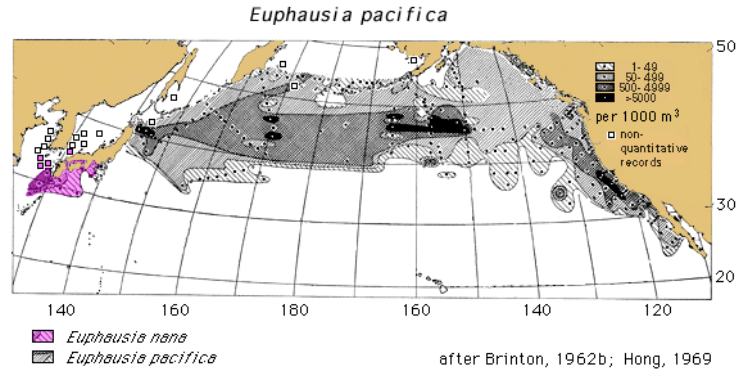
Cross Regional/Research Group Challenges

- Sampling methodology
 - Gear type, spatial range, frequency
- Data processing
 - Subsampling, taxonomy, life history, measurement protocols
- Data comparison
 - Dataset structure, accessibility



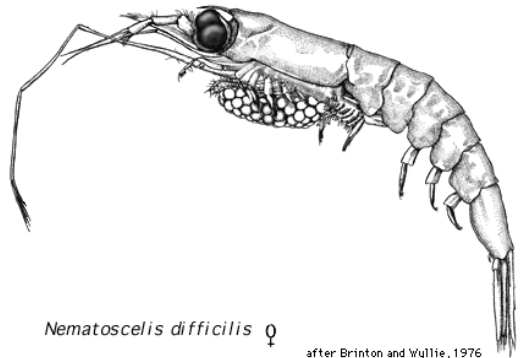
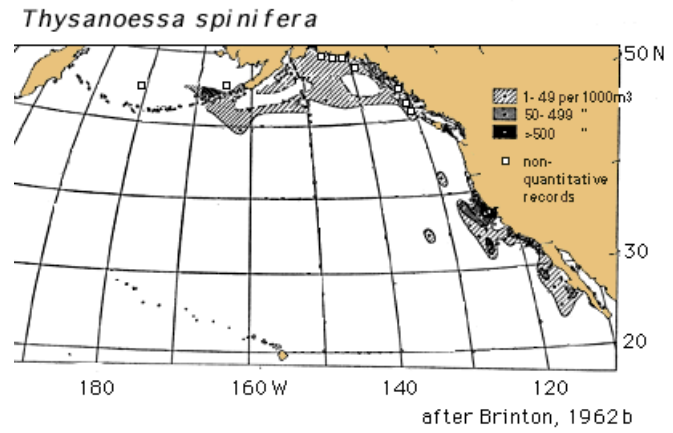
Euphausia pacifica

after Brinton and Wyllie, 1976



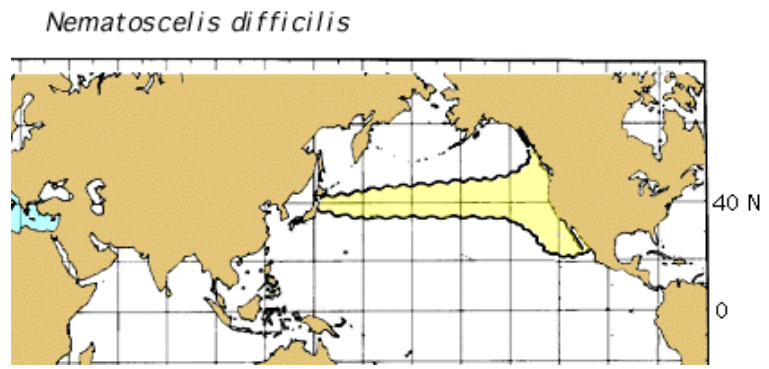
Thysanoessa spinifera ♂

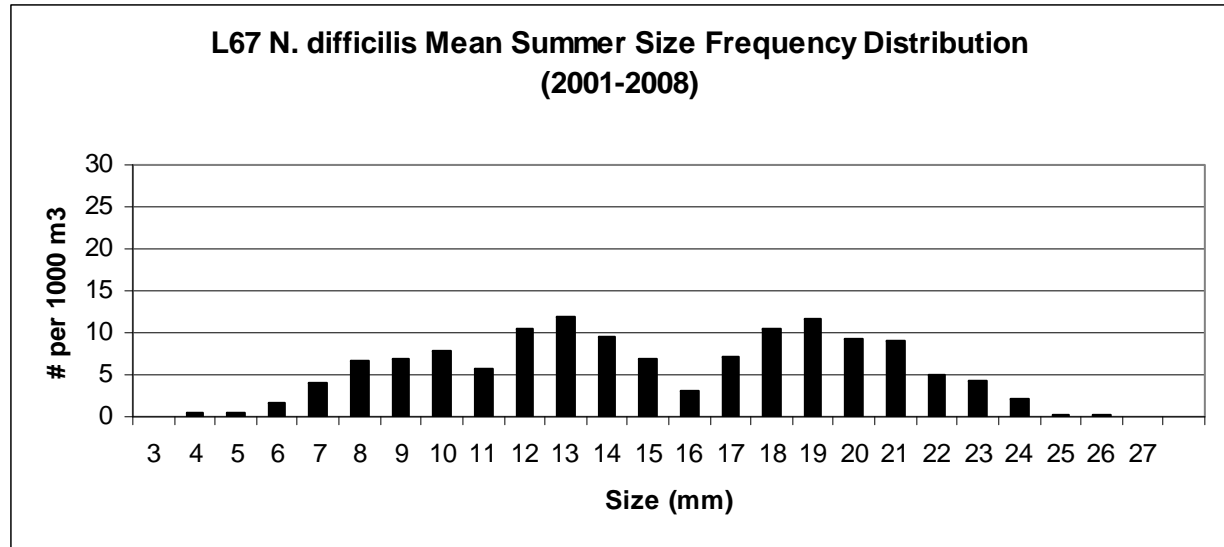
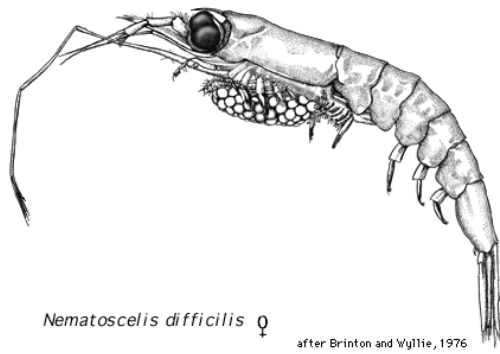
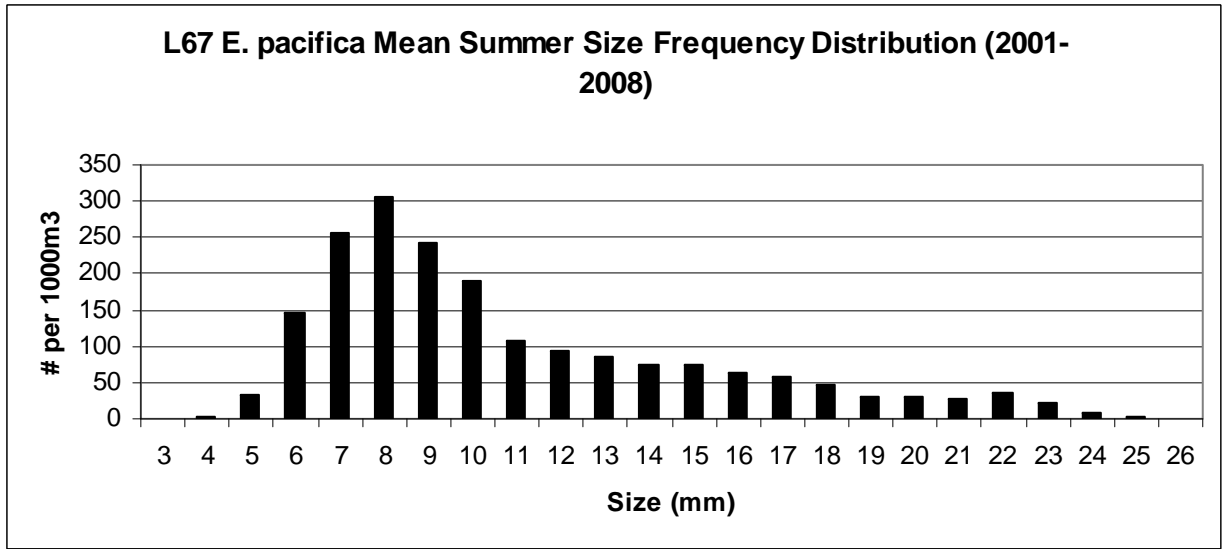
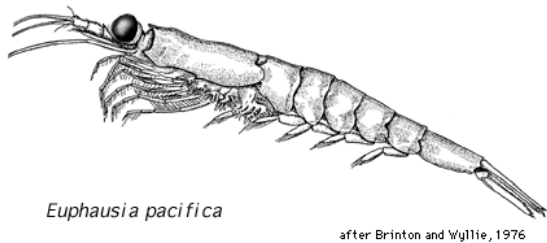
after Brinton and Wyllie, 1976

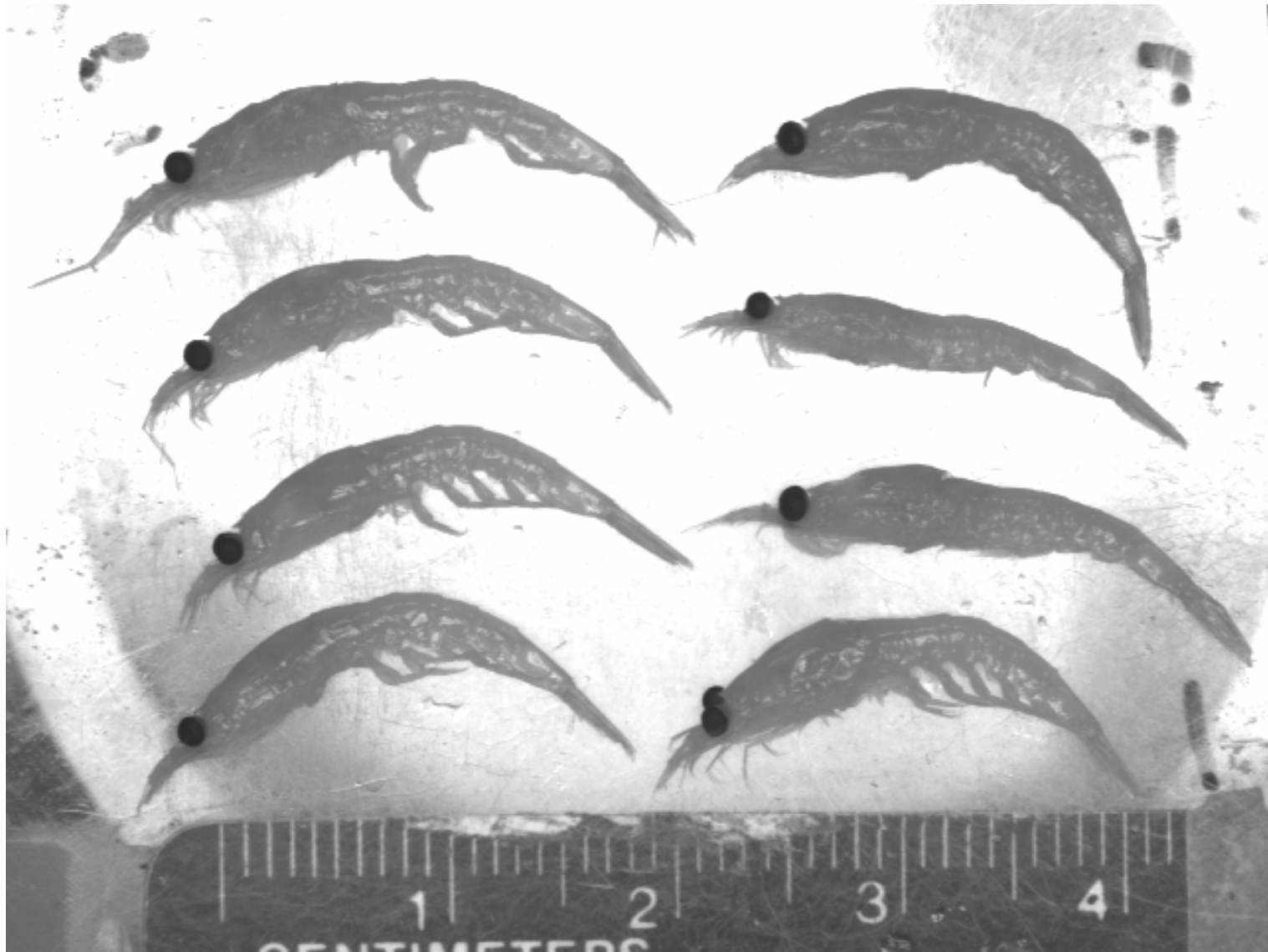


Nematoscelis difficilis ♀

after Brinton and Wyllie, 1976







Comparison of measurements, *E. pacifica* Baldo vs Annie

